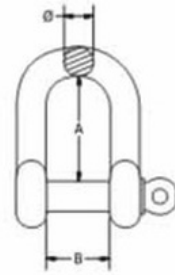


STAINLESS STEEL FITTINGS

Beaver G316 Stainless Steel Standard Dee Shackles

Code	Grade	Shape	Closing Method	Dia mm	A mm	B mm	Weight Kg	UOM	Pack Qty
615404	316	Dee	Screw	4	15	8.3	0.007	Each	1000
615405	316	Dee	Screw	5	17	11.3	0.013	Each	500
615406	316	Dee	Screw	6	22	12.3	0.021	Each	400
615408	316	Dee	Screw	8	28.6	17	0.052	Each	120
615410	316	Dee	Screw	10	35	20	0.11	Each	70
615412	316	Dee	Screw	12	45.5	25	0.19	Each	40
615416	316	Dee	Screw	16	56	32	0.37	Each	15
615419	316	Dee	Screw	19	67	38.5	0.72	Each	10
615422	316	Dee	Screw	22	77	43	1.1	Each	20
615425	316	Dee	Screw	25	85.5	46	1.6	Each	15

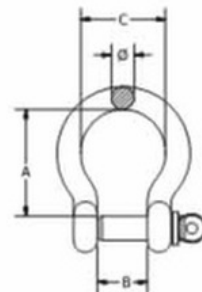
NOT TO BE USED FOR LIFTING



Beaver GG316 Stainless Steel Standard Bow Shackles

Code	Grade	Shape	Closing Method	Dia mm	A mm	B mm	C mm	Weight Kg	UOM	Pack Qty
615504	316	Bow	Screw	4	20	8	13	0.01	Each	1000
615505	316	Bow	Screw	5	23	10.8	17	0.02	Each	500
615506	316	Bow	Screw	6	31	13	21	0.03	Each	400
615508	316	Bow	Screw	8	36.5	17.5	28	0.06	Each	120
615510	316	Bow	Screw	10	44	21.5	35.5	0.11	Each	70
615512	316	Bow	Screw	12	52.5	27	41	0.22	Each	40
615516	316	Bow	Screw	16	73.5	32	54	0.49	Each	15
615519	316	Bow	Screw	19	85	35.6	64.4	0.78	Each	10
615522	316	Bow	Screw	22	94	41	74	1.32	Each	20

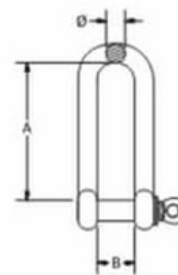
NOT TO BE USED FOR LIFTING



Beaver G316 Stainless Steel Long Dee Shackles

Code	Grade	Shape	Closing Method	Dia mm	A mm	B mm	Weight Kg	UOM	Pack Qty
611404	316	Dee	Screw	4	31.3	7.5	0.01	Each	300
611406	316	Dee	Screw	6	45.3	13.5	0.03	Each	200
611408	316	Dee	Screw	8	60	16.5	0.07	Each	100
611410	316	Dee	Screw	10	75.5	20.8	0.16	Each	50
611412	316	Dee	Screw	12	90	25	0.27	Each	25

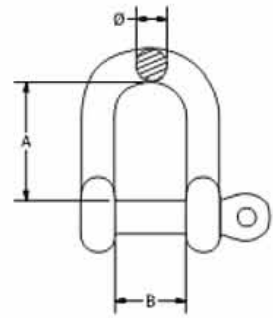
NOT TO BE USED FOR LIFTING



Beaver G316 Stainless Steel "D" Shackle w/- Captive Pin

Code	Grade	Shape	Closing Method	Dia mm	A mm	B mm	Weight Kg	UOM	Pack Qty
615305	316	Dee	Screw	5	17.8	10.4	0.01	Each	500
615306	316	Dee	Screw	6	22.5	13	0.02	Each	400
615308	316	Dee	Screw	8	24.5	17.3	0.05	Each	100
615310	316	Dee	Screw	10	35.6	22.6	0.09	Each	60
615312	316	Dee	Screw	12	42.4	25	0.18	Each	40

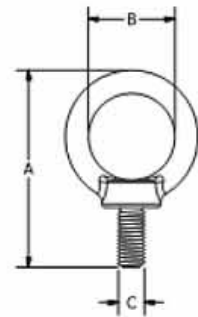
NOT TO BE USED FOR LIFTING



Beaver G316 Stainless Steel Eye Bolts

Code	Grade	Size mm	A mm	B mm	C mm	Weight Kg	UOM	Pack Qty
612406	316	6	37.4	16.8	M6	0.01	Each	300
612408	316	8	47	20.6	M8	0.02	Each	200
612410	316	10	60.7	25.6	M10	0.05	Each	100
612412	316	12	72.3	29.7	M12	0.1	Each	50
612416	316	16	86	35	M16	0.15	Each	20
612420	316	20	103	40.5	M20	0.38	Each	10
612424	316	24	129	49.6	M24	0.85	Each	5

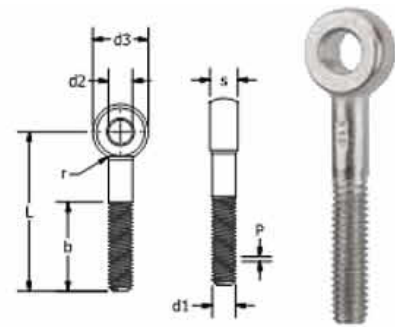
NOT TO BE USED FOR LIFTING



Beaver G316 Stainless Steel Eye Bolt DIN 444

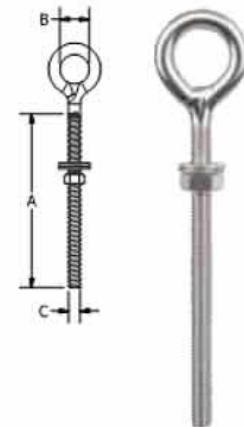
Code	Grade	Size mm	S mm	p mm	d2 mm	d3 mm	L mm	b mm	Weight Kg	UOM	Pack Qty
612640	316	M6	9	1	6	14	40	18	0.01	Each	250
612860	316	M8	11	1.25	8	18	60	22	0.03	Each	250

NOT TO BE USED FOR LIFTING



Beaver G304 Stainless Steel Eye Bolts with Nut & 2 Washers

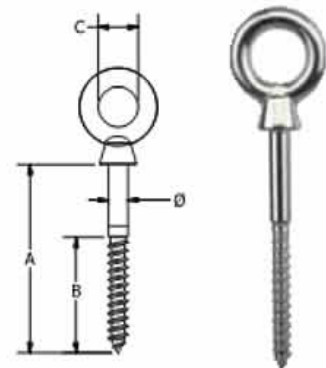
Code	Grade	Size mm	A mm	B mm	C mm	Weight Kg	UOM	Pack Qty
618451	304	5 x 50	50	11	M5	0.01	Each	300
618461	304	6 x 40	40	13	M6	0.02	Each	200
618462	304	6 x 80	80	13	M6	0.03	Each	200
618463	304	6 x 55	55	13	M6	0.02	Each	200
618464	304	6 x 100	100	13	M6	0.03	Each	200
618481	304	8 x 80	80	17	M8	0.06	Each	120
618482	304	8 x 100	100	17	M8	0.06	Each	100
618483	304	8 x 120	120	17	M8	0.07	Each	100
618493	304	10 x 120	120	21	M10	0.12	Each	50
618496	304	12 x 120	120	25	M12	0.17	Each	25



Beaver G304 Stainless Steel Eye Bolts with Nut & 2 Washers

Code	Grade	Size mm	Dia mm	A mm	B mm	C mm	Weight Kg	UOM	Pack Qty
618060	316	6x60	6	60	36	14	0.027	Each	250
618080	316	8x80	8	81	48	18.4	0.05	Each	200
618010	316	10x100	10	98	60	22	0.12	Each	50
618012	316	12x120	12	122.5	72	27.3	0.2	Each	20

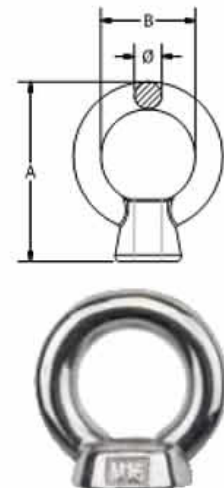
NOT TO BE USED FOR LIFTING



Beaver G316 Stainless Steel Eye Nuts

Code	Grade	Size mm	A mm	B mm	C mm	Weight Kg	UOM	Pack Qty
612506	316	6	4.7	31.3	16.3	0.015	Each	200
612508	316	8	5	38.7	21	0.024	Each	200
612510	316	10	7	48.9	25.8	0.05	Each	100
612512	316	12	9.6	59.7	30.3	0.08	Each	50
612516	316	16	12	70.3	35.3	0.18	Each	50
612520	316	20	15	84	40.2	0.34	Each	25
612524	316	24	19	102.6	50.5	0.56	Each	10

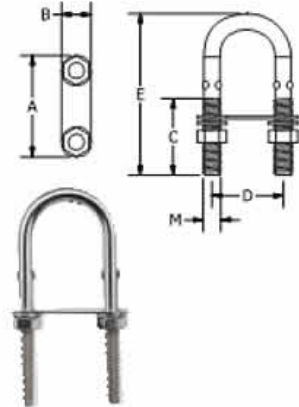
NOT TO BE USED FOR LIFTING



Beaver G304 Stainless Steel 'U' Bolts with Washer & Nut

Code	Grade	Size mm	A mm	B mm	C mm	D mm	E mm	M mm	Weight Kg	UOM	Pack Qty
619005	304	5x80	50	13	39	35	80	M5	0.028	Each	100
619006	304	6x90	50	15	40	35	90	M6	0.04	Each	100
619008	304	8x80	50	15	40	35	80	M8	0.07	Each	80
619008A	304	8x100	50	15	50	35	101.3	M8	0.08	Each	50
619010	304	10x130	70.6	20	55	50	130	M10	0.18	Each	50
619012	304	12x150	83	23	73.6	58.6	150	M12	0.3	Each	50

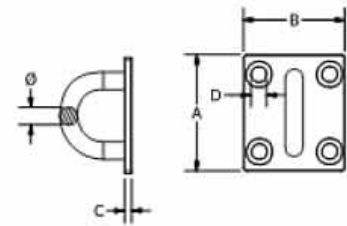
NOT TO BE USED FOR LIFTING



Beaver G304 Stainless Steel Square Pad Eye

Code	Grade	Size mm	Dia mm	A mm	B mm	C mm	D mm	Weight Kg	UOM	Pack Qty
616205	304	5	4.1	35	30.6	2.4	5	0.01	Each	200
616206	304	6	5.3	40	40.8	2.5	6	0.03	Each	100
616208	304	8	5.6	50	45.5	3.5	8	0.06	Each	80

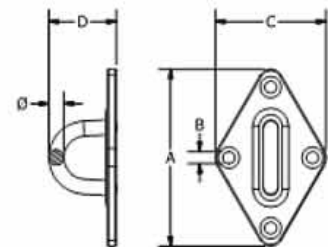
NOT TO BE USED FOR LIFTING



Beaver GG304 Stainless Steel Diamond Pad Eye

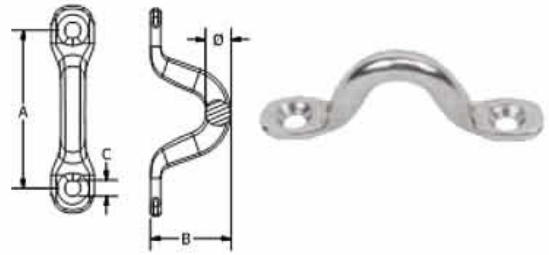
Code	Grade	Dia mm	A mm	B mm	C mm	D mm	Weight Kg	UOM	Pack Qty
618005	304	5	58.8	4	36.5	22.5	0.029	Each	250
618006	304	6	63.9	4.4	40	27	0.04	Each	250
618008	304	8	79.9	5.5	48.8	33	0.07	Each	250

NOT TO BE USED FOR LIFTING



Beaver G304 Stainless Steel Wire Eye Saddles

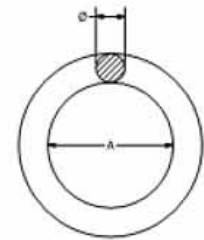
Code	Grade	Dia mm	A mm	B mm	C mm	Weight Kg	UOM	Pack Qty
617704	304	4	32	15.8	3.2	0.004	Each	1400
617705	304	5	40	18	4.3	0.007	Each	600
617706	304	6	44	22	5.3	0.013	Each	500
617708	304	8	51	23	5.2	0.025	Each	200



NOT TO BE USED FOR LIFTING

Beaver G304 Stainless Steel Wire Eye Saddles

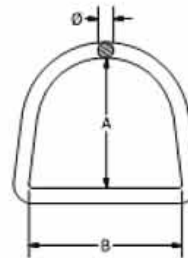
Code	Grade	Dia mm	A mm	Weight Kg	UOM	Pack Qty
616541	304	4	25	0.008	Each	300
616542	304	4	40	0.01	Each	250
616550	304	5	25	0.025	Each	200
616551	304	5	35	0.027	Each	100
616561	304	6	40	0.03	Each	100
616562	304	6	50	0.038	Each	100
616581	304	8	55	0.06	Each	50
616582	304	8	75	0.09	Each	50
616591	304	10	75	0.16	Each	50



NOT TO BE USED FOR LIFTING

Beaver G304 Stainless Steel Dee Rings

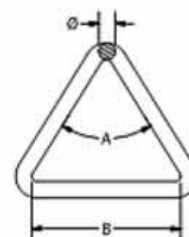
Code	Grade	Dia mm	A mm	B mm	Weight Kg	UOM	Pack Qty
616541D	304	4	25	30	0.008	Each	600
616552D	304	5	40	40	0.025	Each	300
616562D	304	6	50	35	0.03	Each	100
616580D	304	8	50	70	0.069	Each	100
616582D	304	8	75	80	0.075	Each	100



NOT TO BE USED FOR LIFTING

Beaver G304 Stainless Steel Triangle

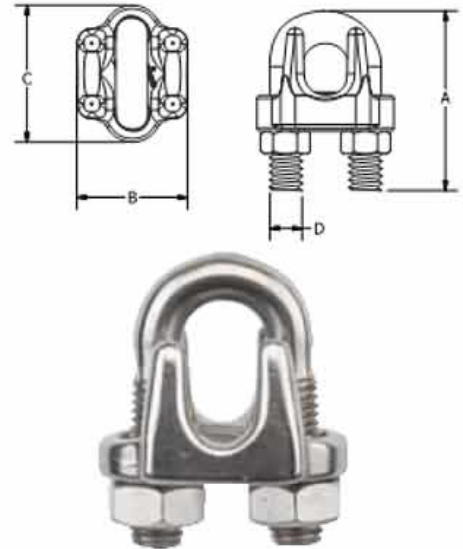
Code	Grade	Dia mm	A mm	B mm	Weight Kg	UOM	Pack Qty
616562T	304	6	60	50.8	0.03	Each	200
616580T	304	8	60	50	0.06	Each	150



NOT TO BE USED FOR LIFTING

Beaver G316 Stainless Steel Wire Rope Grips

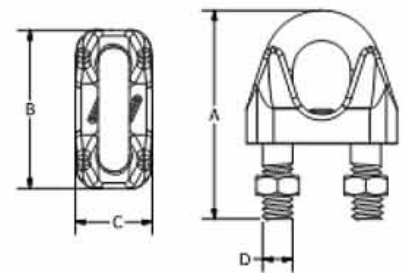
Code	Grade	Size mm	A mm	B mm	C mm	D mm	Weight Kg	UOM	Pack Qty
612202	316	2	18	13	15.3	M3	0.01	Each	800
612203	316	3	24.5	14.5	15.8	M4	0.015	Each	800
612204	316	4	24	18	18.5	M4	0.02	Each	500
612205	316	5	29	19.6	23	M5	0.022	Each	300
612206	316	6	31	20.5	26.3	M6	0.03	Each	200
612208	316	8	41	27	33.5	M8	0.08	Each	100
612210	316	10	52	33.8	42.7	M10	0.15	Each	50
612212	316	12	61	37.8	50	M12	0.23	Each	30
612214	316	14	67.5	42	50.6	M12	0.28	Each	25
612216	316	16	76	47	60	M14	0.41	Each	20
612220	316	20	79	51	61.5	M14	0.47	Each	10
612225	316	25	110	60	75.5	M16	0.93	Each	5



NOT TO BE USED FOR LIFTING

Beaver G316 Stainless Steel Wire Rope Grips (Light Duty)

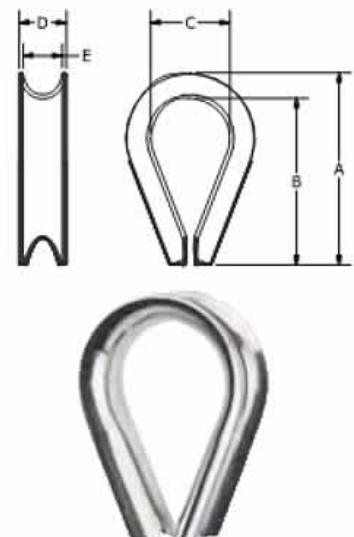
Code	Grade	Size mm	A mm	B mm	C mm	D mm	Weight Kg	UOM	Pack Qty
612203L	316	3	21.2	17	10	M3	0.01	Each	400
612204L	316	4	24	21.3	11	M4	0.016	Each	300
612206L	316	6	31.8	27.5	15.8	M6	0.036	Each	100



NOT TO BE USED FOR LIFTING

Beaver G316 Stainless Steel Wire Rope Thimbles

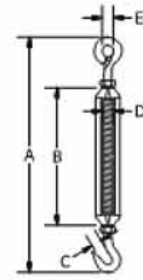
Code	Grade	Size mm	A mm	B mm	C mm	D mm	E mm	Weight Kg	UOM	Pack Qty
612302	316	2	20.6	18	7.5	4.5	3	0.005	Each	1000
612303	316	3	24.3	21	10	6	4.3	0.007	Each	800
612304	316	4	27.8	24.8	11	6.6	5.2	0.008	Each	500
612305	316	5	30.5	26	13	8.5	6.8	0.009	Each	400
612306	316	6	37	32.6	15.5	10	8.8	0.01	Each	250
612308	316	8	51.5	45.5	23	12.5	10	0.02	Each	130
612310	316	10	56.4	50	27	14.6	12	0.03	Each	50
612312	316	12	68	61	32.5	18	14.5	0.05	Each	30
612316	316	16	82.7	75	37.5	22	19	0.09	Each	25



NOT TO BE USED FOR LIFTING

Beaver G316 Stainless Steel Hook & Eye Turnbuckles with Lock Nuts

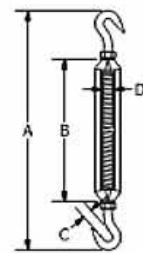
Code	Grade	Size mm	A mm	B mm	C mm	D mm	E mm	Weight Kg	UOM	Pack Qty
600404	316	4	110	61.5	9	M4	8	0.02	Each	300
600405	316	5	127.5	71	9.5	M5	10	0.05	Each	150
600406	316	6	163	90.5	9	M6	12	0.08	Each	90
600408	316	8	212	122	10.3	M8	14	0.15	Each	50
600410	316	10	259	151.5	12.5	M10	16	0.29	Each	20
600412	316	12	321	201	14	M12	18	0.59	Each	10
600416	316	16	397	244	16	M16	26	0.09	Each	5



NOT TO BE USED FOR LIFTING

Beaver G316 Stainless Steel Hook & Hook Turnbuckles with Lock Nuts

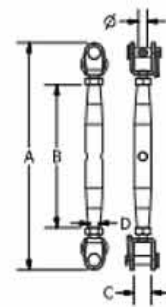
Code	Grade	Size mm	A mm	B mm	C mm	D mm	Weight Kg	UOM	Pack Qty
600404H	316	4	116	61.5	9	M4	0.02	Each	300
600405H	316	5	130	71	9.5	M5	0.05	Each	150
600406H	316	6	167	90.5	8.5	M6	0.08	Each	90
600408H	316	8	214	122	10.3	M8	0.15	Each	50
600410H	316	10	265	151.5	12.5	M10	0.29	Each	20
600412H	316	12	320	201	15	M12	0.59	Each	10
600416H	316	16	385	244	16	M16	0.09	Each	5



NOT TO BE USED FOR LIFTING

Beaver G316 Stainless Steel Jaw & Jaw Bottle Screw

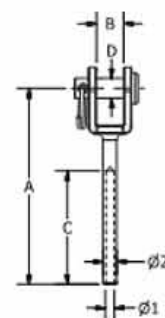
Code	Grade	Size mm	Dia mm	A mm	B mm	C mm	D mm	Weight Kg	UOM	Pack Qty
601505	316	5	5	138	81	10.3	M5	0.04	Each	80
601506	316	6	6	153	92	10.3	M6	0.07	Each	50
601508	316	8	8	188	112	11.2	M8	0.15	Each	50
601510	316	10	10	212	121	15	M10	0.28	Each	50
601512	316	12	12	266	150	17.5	M12	0.49	Each	30



NOT TO BE USED FOR LIFTING

Beaver G316 Stainless Steel Swage Jaw Toggle Terminal with Lock Nuts

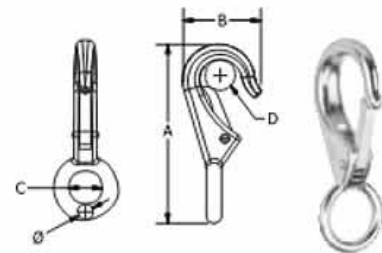
Code	Grade	Dia 1 Inches	Dia 1 mm	Dia 2 mm	A mm	B mm	C mm	D mm	Weight Kg	UOM	Pack Qty
605303	316	1/8"	3.3	6.35	65	7.5	32	6	0.03	Each	250
605304	316	5/32"	4.3	7.5	77	10	40	6	0.04	Each	100
605305	316	3/16"	5.3	9	88	12	57	10	0.07	Each	50
605306	316	1/4"	6.3	12.5	106	14	63	12	0.162	Each	30



NOT TO BE USED FOR LIFTING

Beaver G316 Stainless Steel Rigid Eye Snap Hook

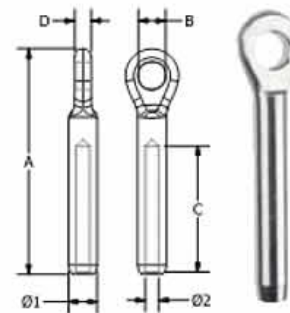
Code	Grade	Dia mm	A mm	B mm	C mm	D mm	Weight Kg	UOM	Pack Qty
618810	316	3.8	55.8	23.5	12.2	8.8	0.02	Each	300
618815	316	4.5	72.8	29.6	16.7	8.8	0.037	Each	300
618817	316	6.1	86.5	37	19.4	12	0.06	Each	200



NOT TO BE USED FOR LIFTING

Beaver G316 Stainless Steel Swage Eye End Terminal

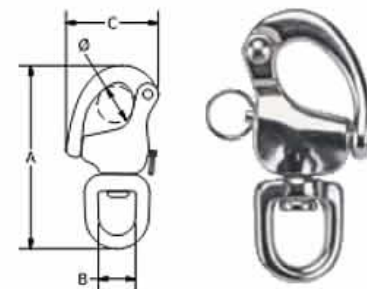
Code	Grade	Wire Dia Inches	Wire Dia mm	Dia 1 mm	Dia 2 mm	A mm	B mm	C mm	D mm	Weight Kg	UOM	Pack Qty
601803	316	1/8"	3.2	6.3	3.5	62.3	6.5	38.7	3.8	0.012	Each	500
601804	316	5/32"	4	7.5	4.3	77	8.5	45	4.9	0.023	Each	300
601805	316	3/16"	5	9	5.3	89	10.6	53.8	5.8	0.035	Each	200
601806	316	1/4"	6	12.5	6.3	106.7	13	63	7.8	0.085	Each	150
601808	316	5/16"	8	16	8.3	135	14.7	81.8	9.9	0.17	Each	100



NOT TO BE USED FOR LIFTING

Beaver G316 Stainless Steel Swivel Eye Snap Shackle

Code	Grade	Dia mm	A mm	B mm	C mm	Weight Kg	UOM	Pack Qty
618512	316	12	71	13	33	0.06	Each	150
618516	316	16	86	15	42	0.11	Each	100
618522	316	22	122	20.6	58	0.4	Each	50



NOT TO BE USED FOR LIFTING

Beaver G316 Stainless Steel Swivel Eye Snap

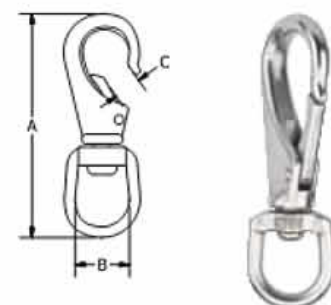
Code	Grade	Size mm	A mm	B mm	C mm	Weight Kg	UOM	Pack Qty
616812	316	12	87.5	21.5	9.8	0.05	Each	100
616816	316	16	101	21.9	11.5	0.1	Each	50
616825	316	25	118.5	22.3	12	0.15	Each	10



NOT TO BE USED FOR LIFTING

Beaver G316 Stainless Steel Swivel Eye Snap

Code	Grade	Size mm	A mm	B mm	C mm	Weight Kg	UOM	Pack Qty
616812	316	12	87.5	21.5	9.8	0.05	Each	100
616816	316	16	101	21.9	11.5	0.1	Each	50
616825	316	25	118.5	22.3	12	0.15	Each	10

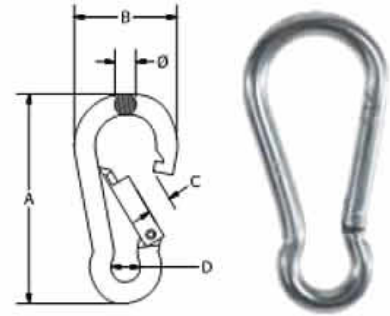


NOT TO BE USED FOR LIFTING

Beaver G316 Stainless Steel Carbine Hooks

Code	Grade	Dia mm	A mm	B mm	C mm	D mm	Weight Kg	UOM	Pack Qty
618304	316	4	42	20	6	5	0.01	Each	500
618305	316	5	50	26.5	7	7.8	0.02	Each	400
618306	316	6	60	30	7.5	7.8	0.03	Each	300
618308	316	8	80	40.5	10	10.8	0.06	Each	100
618310	316	10	100	50	12	14	0.15	Each	50
618312	316	12	140	64	21	20	0.24	Each	25

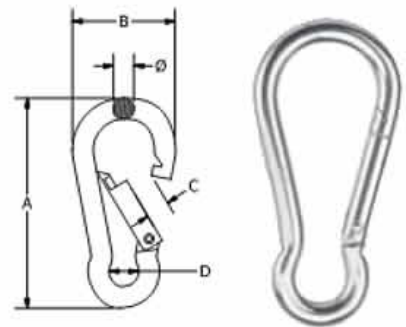
NOT TO BE USED FOR LIFTING



Beaver G316 Stainless Steel Carbine Hooks

Code	Grade	Dia mm	A mm	B mm	C mm	D mm	Weight Kg	UOM	Pack Qty
618204	316	4.5	42	20.5	6	6.5	0.01	Each	600
618205	316	5	50	26.5	7	8	0.018	Each	500
618206	316	6	60	30	7.5	8.5	0.028	Each	400
618208	316	8	80	40.5	10	12	0.055	Each	100
618210	316	10	100	50	12	15	0.145	Each	50
618211	316	11	120	58	16	19	0.18	Each	40

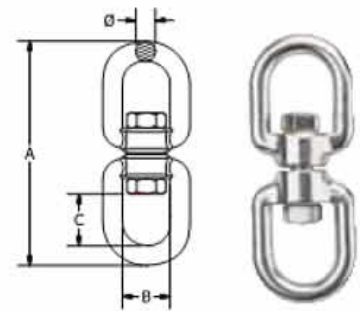
NOT TO BE USED FOR LIFTING



Beaver G316 Stainless Steel Eye & Eye Swivels

Code	Grade	Dia mm	A mm	B mm	C mm	W.L.L mm	Weight Kg	UOM	Pack Qty
619106	316	6	66	15	15.5	300	0.05	Each	100
619108	316	8	90	19	21.5	475	0.12	Each	100
619110	316	10	112	23.5	26.5	875	0.21	Each	100
619113	316	13	148	33	33	1250	0.51	Each	50
619116	316	16	184	38	44	2125	0.95	Each	25

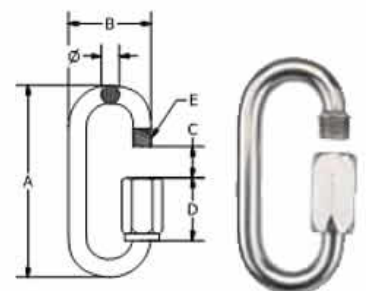
NOT TO BE USED FOR LIFTING



Beaver G304 Stainless Steel Quick Links

Code	Grade	Dia mm	A mm	B mm	C mm	D mm	E mm	Weight Kg	UOM	Pack Qty
601604	316	4	43	18.5	7	14	4	0.011	Each	300
601605	316	5	52	22.5	8.5	18	5	0.02	Each	300
601606	316	6	61.5	27	9.5	21	6	0.03	Each	200
601608	316	8	77	35.5	11	25	8	0.07	Each	150
601610	316	10	89	42	13.5	28	10	0.14	Each	100

NOT TO BE USED FOR LIFTING



Beaver G316 Stainless Steel Jaw & Jaw Swivels

Code	Grade	Dia mm	A mm	B mm	C mm	W.L.L mm	Weight Kg	UOM	Pack Qty
619306	316	6	64.4	12	12	300	0.07	Each	100
619308	316	8	87	16	15.5	475	0.14	Each	100
619310	316	10	111	18.5	20.5	875	0.258	Each	50
619313	316	13	143.5	26	25.5	1250	0.62	Each	25

NOT TO BE USED FOR LIFTING

