



Pacific Hoists

PACIFIC GENERAL PURPOSE HAND WINCHES

The Pacific General Purpose Hand Winches are compact, lightweight and a cost-effective solution for a variety of applications. They can be supplied with a powder-coated or a marine-coated corrosion resistant finish, depending on your application.

The Salt Spray Test is an international standardised test method used to check the corrosion resistance of coated samples. Protective coatings provide corrosion resistance to metallic parts made of steel, zinc and aluminium alloys or brass. Since these coatings can provide a high corrosion resistance through the intended life of the part in use, it is necessary to check this by other means than normal outside exposure. The Salt Spray Test produces an accelerated corrosive attack to the coated samples, in order to predict its suitability in use as a protective finish. The appearance of corrosion products (i.e. rust) is evaluated after a period of time. Test duration depends on the resistance of the coating; the more resistant the coating is, the longer the period in testing without showing signs of corrosion. After 1,000 hours of the Salt Spray Test, the Pacific Brake Winches did not show any sign of corrosion and the coating was still intact.

OPC Kylan Coating is a new and unique process which uses baked-on, non-toxic, environmentally friendly, organic, macromolecular monomer coating compound. This, combined with aluminium and zinc, provides a highly corrosion resistant coating on steel. By using OPC Kylan Coating with stainless steel fasteners and fittings on all of the winches, Pacific Hoists has a unique range of corrosion resistant winches which can stand up to over 1000 hours of salt spray testing.

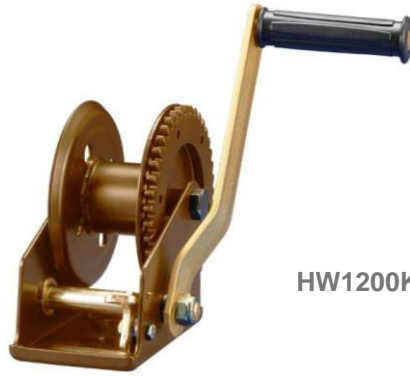
Features

- Compact, lightweight and rugged construction.
- Mechanical components enclosed for protection and safety.
- Available with a powder-coated or a marine-coated corrosion resistant finish.
- Rope to drum fixing clamp provided.



HW1500

- High precision construction minimises gear noise.
- HW1500 is a worm drive version
- Heat-treated gears.
- Strong removable handles.
- Available with optional rope or strap.



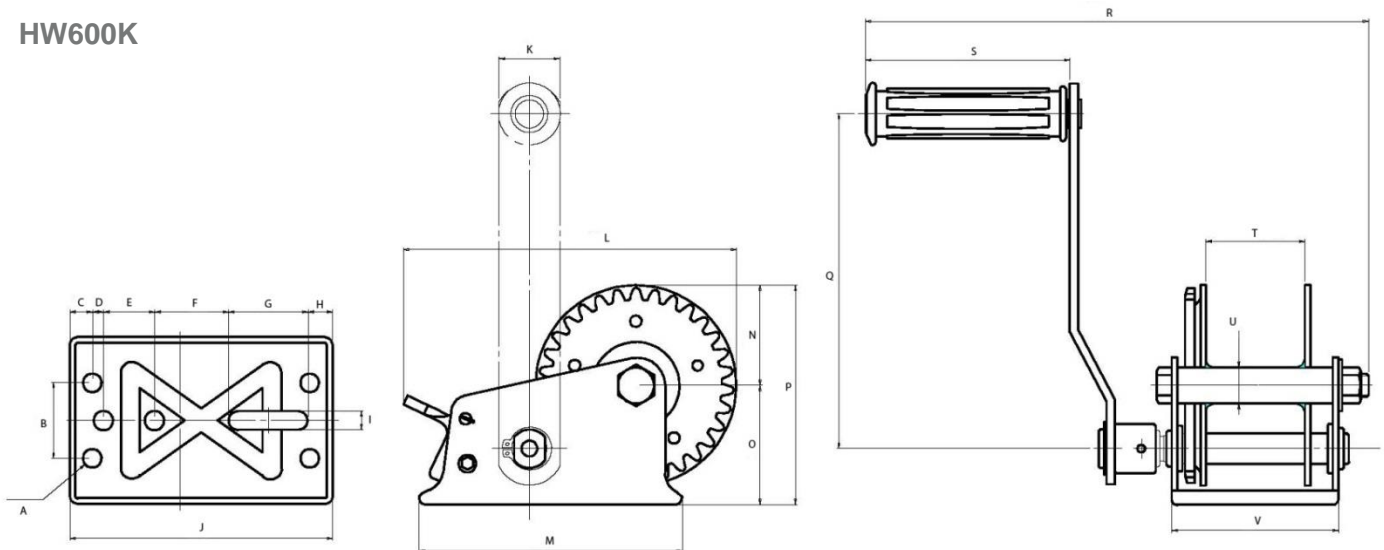
HW1200K

Specifications

MODEL	HW600K	HW1200K	HW1500
Pulling Capacity (kg)	280	550	680
Lifting Capacity	N/A	N/A	340
Finish	Kylan	Kylan	Powder-coated
Gear Ratio	3.1 : 1	4.1 : 1	41.0 : 1
Handle Length (mm)	175	210	195
Hub Diameter (mm)	Ø19	Ø34	Ø48
Cable Diameter (mm x m)	Ø4.0 x 30	Ø4.8 x 20	Ø5.6 x 23
Net. Weight (kg)	2.26	2.84	5.0

Dimensions (in mm)

HW600K



The information shown is to be used as a guide only. Specifications are subject to change without notice. All materials handling or lifting jobs should be assessed individually. Pacific Hoists products are NOT to be used for lifting or lowering persons.

HEAD OFFICE

24 Foundry Rd,
Seven Hills NSW 2147 Australia
| P +61 2 8825 6900
| F +61 2 8825 6999
| E sales@pacifichoists.com.au

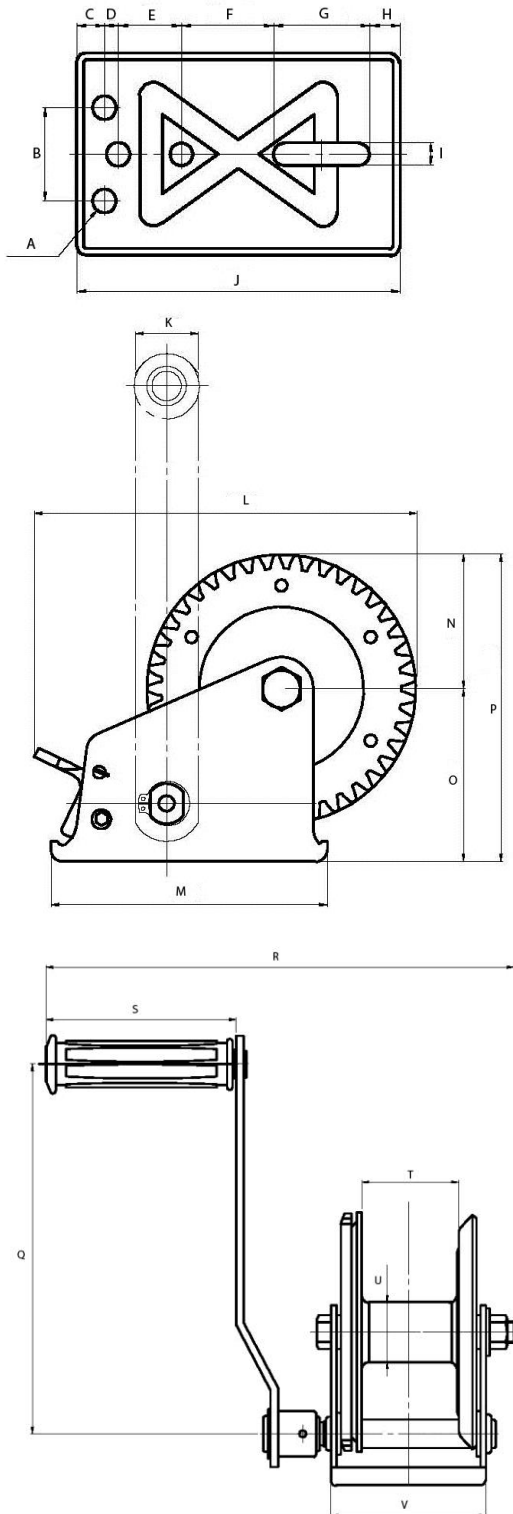
WESTERN AUSTRALIA

Unit 1, 31 Colin Jamieson Drive,
Welshpool WA 6106 Australia
| P +61 8 6253 1000
| F +61 8 9458 9840
| E sales@pacifichoists.com.au

NEW ZEALAND

11 Druces Rd,
Wiri 2104 Auckland New Zealand
| P +64 9 263 5566
| F +64 9 263 5567
| E info@pacifichoists.co.nz

HW1200K



MODEL	HW600K	HW1200K
A	6 – Ø10	4 – Ø10
B	40	40
C	12	12
D	6	6
E	27	27
F	39	39.5
G	42	41.5
H	13	13
I	10	10
J	139	139
K	32	32
L	176	193
M	139	139
N	53	68
O	63	87
P	116	155
Q	177	210
R	266	266
S	108	108
T	52.3	55
U	Ø19	Ø34
V	88	88



The information shown is to be used as a guide only. Specifications are subject to change without notice. All materials handling or lifting jobs should be assessed individually. Pacific Hoists products are NOT to be used for lifting or lowering persons.

HEAD OFFICE

24 Foundry Rd,
Seven Hills NSW 2147 Australia
| P +61 2 8825 6900
| F +61 2 8825 6999
| E sales@pacifichoists.com.au

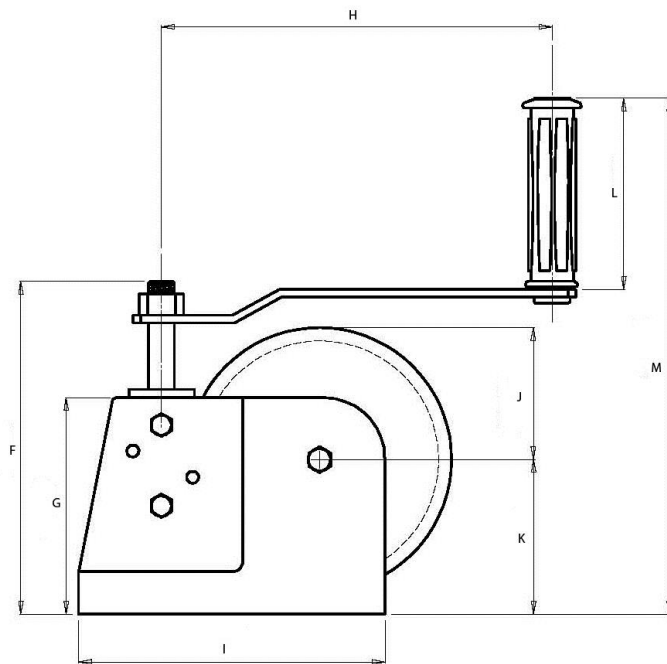
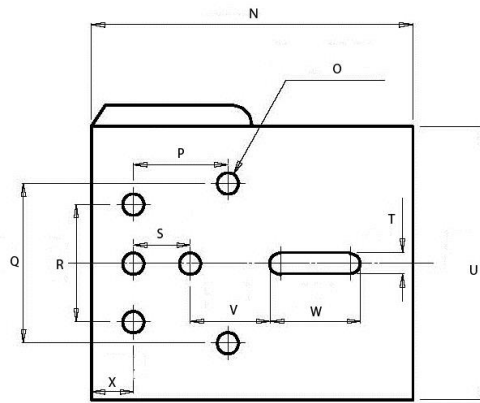
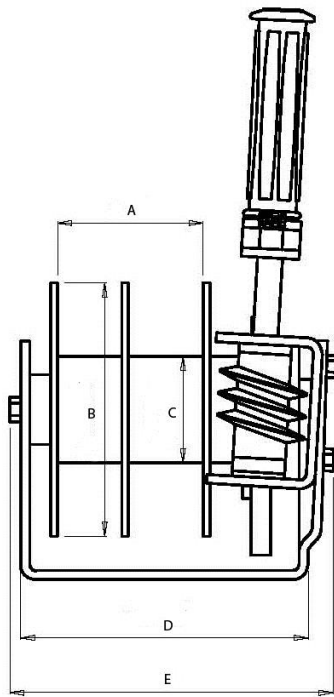
WESTERN AUSTRALIA

Unit 1, 31 Colin Jamieson Drive,
Welshpool WA 6106 Australia
| P +61 8 6253 1000
| F +61 8 9458 9840
| E sales@pacifichoists.com.au

NEW ZEALAND

11 Druces Rd,
Wiri 2104 Auckland New Zealand
| P +64 9 263 5566
| F +64 9 263 5567
| E info@pacifichoists.co.nz

HW1500



MODEL	HW1500
A	70
B	Ø115
C	Ø48
D	130
E	151
F	161
G	108
H	195
I	153
J	67.5
K	75
L	108
M	268
N	153
O	6 – Ø10
P	45
Q	76
R	56
S	27
T	10
U	130
V	38
W	43
X	20



The information shown is to be used as a guide only. Specifications are subject to change without notice. All materials handling or lifting jobs should be assessed individually. Pacific Hoists products are NOT to be used for lifting or lowering persons.

HEAD OFFICE

24 Foundry Rd,
Seven Hills NSW 2147 Australia
| P +61 2 8825 6900
| F +61 2 8825 6999
| E sales@pacifichoists.com.au

WESTERN AUSTRALIA

Unit 1, 31 Colin Jamieson Drive,
Welshpool WA 6106 Australia
| P +61 8 6253 1000
| F +61 8 9458 9840
| E sales@pacifichoists.com.au

NEW ZEALAND

11 Druces Rd,
Wiri 2104 Auckland New Zealand
| P +64 9 263 5566
| F +64 9 263 5567
| E info@pacifichoists.co.nz